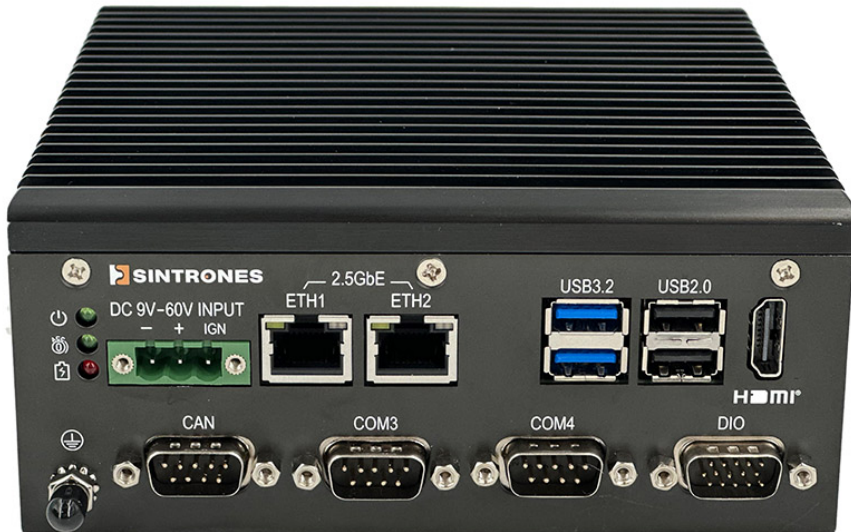


1029.00 EUR

incl. 19% VAT, plus [shipping](#)

- DIN-rail !
- 2x 2.5GbE !
- M12 !
- Backup Batterie Support !



Support: [Specifications](#)

- Industrial Grade Amston Lake Processor and Ethernet Controller
- Intel® Twin Lake Processor SKU Available
- 2 x 2.5GbE for IoT Devices Connectivity
- 1 x Built-in CAN FD for Vehicle Device Communication
- Dual NVMe SSD Support for NVR Applications
- Built-in Watchdog and Smart Power Management for System Health Monitoring
- Supports DIN-rail and Wall-mount Installation

**Prozessor / Graphics**

**Memory**

**Security**

**Intel N150**

**Intel Graphics**

**1 x SO-DIMM DDR5 up to 16 GB**

**1 x TPM 2.0**

**Watchdog: Auto reset for unresponsive system**

	1 x HDMI® with support for 4K@60Hz as specified in HDMI 2.0b
	1 x Line-out, 1 x Mic-in (Optional)
Interface	<ul style="list-style-type: none"> <li>• 1 x 2.5GbE from I226-IT via RJ-45 or M12 X-code for PoE model</li> <li>• 4 x GbE* from Marvell Ethernet Switch w/ PoE (PSE Class 3: 15W) via RJ-45 or M12 X-code</li> </ul>
	<ul style="list-style-type: none"> <li>* Share with 1GbE bandwidth; Power budget: 60W</li> <li>**Non-PoE model: 2 x 2.5GbE</li> </ul>
	1 x CAN 2.0
	2 x USB 3.2, 2 x USB 2.0
	2 x RS-232/422/485 ports, expandable with 4 optional COM ports
INTERNAL EXPANSION	8 x DI (9-60VDC), 4 x DO (12VDC/100mA)
	1 x M.2 3042/3052 Key B for WWAN with dual Nano SIM support
	<ul style="list-style-type: none"> <li>• 1 x M.2 2230 Key E for Wi-Fi/BT</li> <li>• 1 x M.2 2280 Key M for NVMe SSD</li> <li>• 1 x M.2 2280 Key M for NVMe/SATA SSD</li> </ul>
STORAGE (Internal)	Windows 11 IoT Enterprise LTSC, Ubuntu 22.04/24.04 LTS
Operating System / SDK	Processor N150: -30°C ~70°C (-22°F~158°F) with 0.6m/s airflow * Operating temp. varies by accessories installed.
Operating Temp.	-40 ~ 80°C (-40°F ~ 176°F)
Storage Temp.	10% RH – 90% RH (non-condensing)
Relative Humidity	CE, FCC Class A, UKCA, E-Mark
Certification / Standard	IEC 60068-2-64, random, 2.5G@5~500Hz, 1hr/axis
Vibration	MIL-STD-810H, Method 514.8, Procedure I, Category 4
Shock	MIL-STD-810H, Method 516.8, Procedure I, trucks and semi-trailers=15G (11ms)
Ingress Protection	IP40
	DC 9 – 60V Input
	Ignition detection, Smart Power Management
Power	Battery Backup Unit (BBU)
	Backup battery for system power backup
	* Non-PoE model only
	Aluminum Alloy with Fanless Design
	6 x SMA connector panel mount hole
Mechanical	DIN rail, Wall-mount
	1.90kg (4.19 lb)
	M12 PoE model: 150 x 150 x 87 mm (5.91 x 5.91 x 3.43 in.)
	VBOX-3132P-yyy-zz
	(yyy=M12X=M12 interface, yyy = Empty=RJ-45 interface; zz=A8=Intel Atom x7835RE, zz=A4=Intel Atom® x7433RE)
ORDERING INFORMATION	VBOX-3132-D25-M12X-zz
	(zz=A8=Intel Atom® x7835RE, zz=N4=Intel® Processor N150)
	VBOX-3132-D25-zz
	(zz=N4=Intel® Processor N150)